

蝶阀型号编制说明

Explanations to butterfly valve model establishment

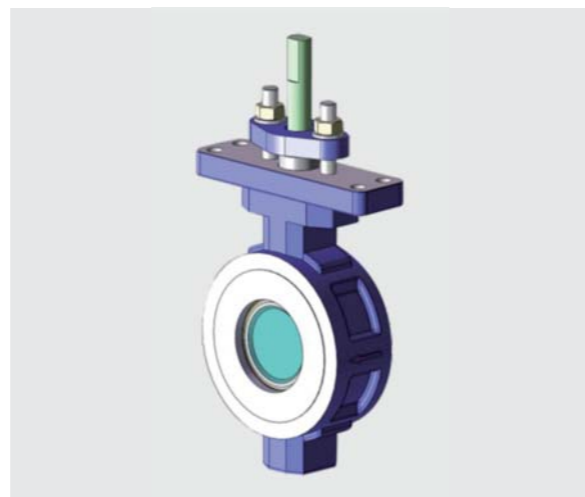
1	2	3	4	5	6	7	8	9
6"(DN150)	D	W	150	M	WB	17	S4	PT

例如：要订购标准型、美标、对夹式、150磅级、手动、阀体材料为WCB，阀杆材料为174PH，碟板材料为304，密封材料为PTFE，阀门通径为6" (DN150) 的蝶阀。

For example: to order the butterfly valve with standard type, American standard, wafer type, 150lb, manual, body material WCB, stem material 174PH, butterfly plate material 304, seal material PTFE, valve diameter 6" (DN150)

型号编写为：6"-DW150-M-WB17S4PT  
The model is written as: 6"-DW150-M-WB17S4PT

1 阀门通径 Valve size	
美标	2"-120" (英寸inch)
国标	DN50-DN3000 (mm)
2 阀门的特征代号 Valve feature code	
D	标准型 Standard code
F	防火型(耐火型) Fireproof type (fire resistant type)
3 连接形式代号 Connection type code	
W	对夹式 Wafer type
L	凸耳式 LUG type
F	法兰式 Double Flange type
H	对焊式 Welded type
4 压力等级代号 Pressure class code	
150	ANSI CLASS 150Lb
300	ANSI CLASS 300 Lb
600	ANSI CLASS 600 Lb
5 驱动方式代号 Driving mode code	
M	手动 Manual
K	光杆 Bare stem
G	蜗轮传动 Worm gear transmission
P	气动 Pneumatic
D	电动 Electric



6 阀体材料代号 Body material code	
WB	碳钢WCB Carbon steel
S4	不锈钢CF8 Stainless steel CF8
S6	不锈钢CF8M Stainless steel CF8M
SL	不锈钢CF3 Stainless steel CF3
SM	不锈钢CF3M Stainless steel CF3M
AM	蒙乃尔 Monel
AH	哈氏合金 Hastelloy alloy
7 阀杆材料代号 Stem material code	
17	马氏体不锈钢17-4PH Martensite stainless steel 17-four PH
S4	不锈钢304 Stainless steel 304
S6	不锈钢316 Stainless steel 316
R1	不锈钢1CR13 Stainless steel 1CR13
R2	不锈钢2CR13 Stainless steel 2CR13
8 蝶板材料代号 Butterfly plate material code	
S4	不锈钢CF8 Stainless steel CF8
S6	不锈钢CF8M Stainless steel CF8M
SL	不锈钢CF3 Stainless steel CF3
SM	不锈钢CF3M Stainless steel CF3M
9 密封阀座的材料代号 Seal of the seat material code	
PT	PTFE聚四氟乙烯
RT	RPTFE增强聚四氟乙烯
PL	对位聚苯PPL

概述

Summary

高性能蝶阀是本公司自行研制并引进欧洲先进技术转化产品。该蝶阀具有超独特的产品结构，超可靠的密封性能，超广阔的工况条件，超低小的操作扭矩，超长久的使用寿命，特殊工况安全防火，同类产品处于世界领先地位。

High performance butterfly valve is our company's own design product which apply European advanced technology. This butterfly valve has a unique structure with ultra reliable sealing performance, ultra wide working conditions, ultra low operating torque, ultra long service life, fire safe in special conditions. The high performance butterfly valve has a leading position compare to similar products around the world.

阀门尺寸有 Valve size includes		
Class 150 对夹式 (Wafer)	1.5"~60"	DN40~DN1500
Class 150 凸耳式 (LUG)	2"~60"	DN50~DN1500
Class 150 法兰式 (Double Flange)	3"~60"	DN80~DN1500
Class 300 对夹式 (Wafer)	2"~24"	DN50~DN600
Class 300 凸耳式 (LUG)	2.5"~24"	DN65~DN600
Class 300 法兰式 (Double Flange)	3"~24"	DN80~DN600

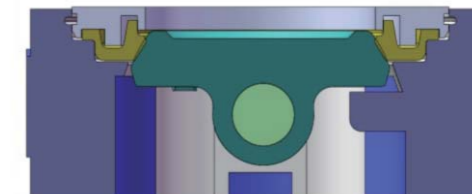
该系列高性能对夹式蝶阀使用多种结构材料，包括符合NACE要求和抗磨蚀的。并可提供用于氯气、氧气、高真空和腐蚀性介质及低温环境的特殊阀门。

The series of high performance wafer type butterfly valves uses various structure materials, including those that meet NACE requirements and anticorrosive materials. Special valves that can be used in chlorine, oxygen, high vacuum, corrosive media and cryogenic condition are also available.

- 特点 Features**
- 使用独特的动载密封PTFE阀座设计，弹性好，可靠性高；
  - 无须增加O形圈或金属部件来保持密封；
  - 唇缘式密封结构可补偿温度和压力的变化；
  - 使用寿命长，维修量小；
  - 密封试验，双向达到无气泡泄漏。
  - The unique dynamic load seal PTFE seat design is adopted with good elasticity and high reliability.
  - Sealing can be maintained without the need of adding O ring or metal part.
  - The lip type sealing structure can compensate for the changes of temperature and pressure.
  - Long service life and low maintenance.
  - In seal test, there is no bubble and leakage at both directions.

偏置轴和偏心蝶板设计 Design of offset shaft and eccentric butterfly plate

- 在开启和处于中间位置时阀座与蝶板不发生接触；
- 在阀座上下部位无磨损点；
- 扭矩低，操作机构要求小。
- The seat and butterfly plate do not contact each other when the valve is opened or at the middle position.
- There is no wear point at the upper and lower parts of the seat.
- Low torque with low requirement for operating mechanism.



耐火结构 Fire resistant structure

耐火型阀门按API 607经过火烧试验。  
The fire resistant type valve is subjected to fire test according to API 607.

阀座类型 Seat type

PTFE、R-PTFE、防火阀座等。  
PTFE, R-PTFE, Fireproof seat, etc.

轴的固定可靠 Reliable fixing of shaft

轴的顶端有防吹出结构，在轴意外断裂时防止轴的上部移窜出压盖。  
The anti-blow-out structure is provided at the top of the shaft to prevent the shaft from running out of the gland in case of accidental breaking of the shaft.

阀座维修保养方便 Convenient seat maintenance and servicing

只要取下嵌件即可更换阀座，不必拆卸蝶阀和轴。  
The seat can be replaced just through removing the inserts without the need of disassembling the butterfly valve and shaft.

断流和控制兼备 Provided with shut-off and control functions

- 具有优良的控特性；
- 流量特性曲线等比变化；
- 调节范围广；
- 即使用于控制仍能紧密密封。
- Having excellent control characteristics
- Proportional change of flow characteristic curve
- Wide adjusting range
- Tight sealing can be realized even when it is used for control.

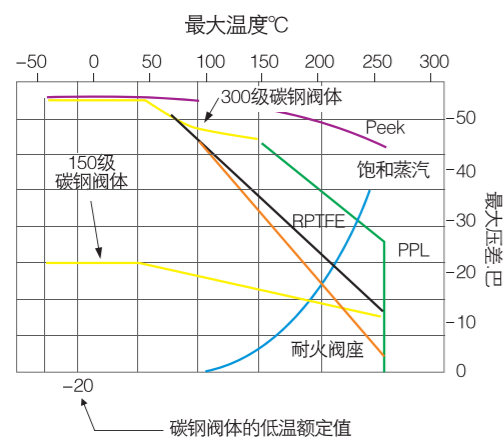
额定值  
Rated value

阀座额定值

曲线上表示的阀座额定值只对阀座而言，是基于阀门全闭是蝶阀两端的压差。这些额定值可作为通用条件下使用指南。依据以往经验，经过改进和变换其他阀座材料，使用的额定值可更高。

Seat rated value

The seat rated values indicated on the curve are only for the seat. It is the differential pressure between the two ends of the butterfly valve when the valve is fully closed. These rated values can serve as use guide under general conditions. According to past experience, the rated values for improved and changed other seat materials may be higher.



阀体额定值

阀体的最大工作压力和各种材料阀体的试验压力示于下面的阀体压力额定值表中。实际工况使用压力要根据阀座额定值来决定。

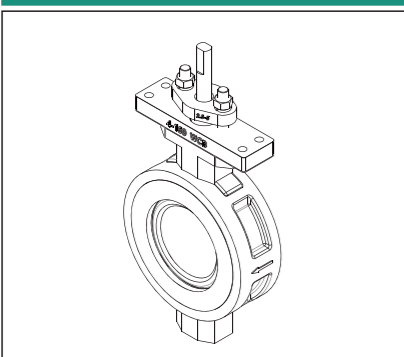
Body rated value

The maximum working pressure of body and testing pressure of body of various materials are listed in the body pressure ratings table. The actual working pressure in the working conditions shall be decided according to the seat rated values.

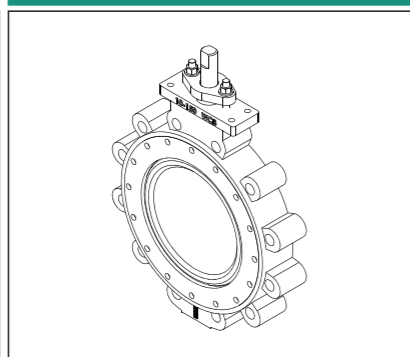
150级阀体的额定值(bar) Rated value of 150lb body (bar)					
温度°C Temperature	碳钢* Carbon steel	球铁* Ductile iron	316不锈钢* Stainless steel	20合金* 20# alloy	蒙乃尔 Monel
-20 to38	19.7	17.2	19.0	15.8	15.8
93	17.9	16.2	16.5	13.8	13.8
149	15.8	14.8	14.8	12.4	13.1
204	13.8	13.8	13.4	11.0	12.8
260	11.7	11.7	11.7	10.3	11.7
试验压力	31	27.6	29.3	24.1	24.1

300级阀体的额定值(bar) Rated value of 300lb body (bar)				
温度°C Temperature	碳钢* Carbon steel	316不锈钢* Stainless steel	20合金* 20# alloy	蒙乃尔 Monel
-20 to38	51	49.6	41.4	41.1
93	46.5	42.7	35.9	36.5
149	45.2	38.6	32.1	34.1
204	43.8	35.5	29.0	33.1
260	41.4	33.1	26.9	32.8
试验压力	77.6	75.8	62	62

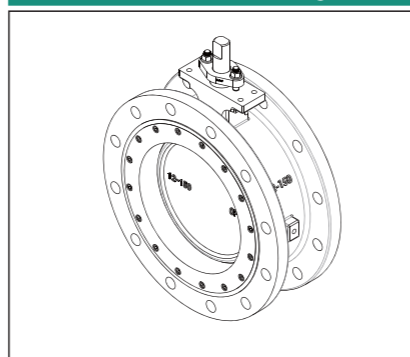
对夹式 Wafer



凸耳式 LUG



法兰式 Double Flange



阀门扭矩  
Valve torque

阀门尺寸 Valve size		150磅级扭矩, 轴处于下游, 标准阀座 关闭压差 Closing differential pressure					
英寸 Inch	DN	lb-ft@ 100psi	N.m@ 6.9bar	lb-ft@ 200psi	N.m@ 13.8bar	lb-ft@ 285psi	N.m@ 19.7bar
2	50	19	26	20	28	21	29
2-1/2	65	21	29	23	31	24	33
3	80	25	34	27	37	29	39
4	100	35	47	39	53	43	58
5	125	48	65	56	76	63	86
6	150	72	97	83	113	93	126
8	200	121	164	142	193	160	217
10	250	163	222	202	274	234	318
12	300	214	290	287	390	350	475
14	350	362	491	505	684	626	849
16	400	463	628	646	876	802	1087
18	450	602	816	844	1144	1050	1423
20	500	810	1098	1140	1546	1421	1926
24	600	1234	1673	1758	2384	2200	2983
30	750	2170	2942	2940	3986	3595	4873
36	900	3530	4786	4860	6589	5990	8121
42	1050	5780	7837	8060	10928	10000	13558
48	1200	9170	12433	12840	17409	15960	21638
54	1350	12950	17558	17900	24269	22110	29977
60	1500	19020	25790	26040	35310	32000	43397

阀门尺寸 Valve size		150磅级扭矩, 轴处于下游, 防火阀座 关闭压差 Closing differential pressure					
英寸 Inch	DN	lb-ft@ 100psi	N.m@ 6.9bar	lb-ft@ 200psi	N.m@ 13.8bar	lb-ft@ 285psi	N.m@ 19.7bar
2	50	28	39	30	42	32	45
2-1/2	65	42	57	45	61	47	64
3	80	53	72	57	77	59	81
4	100	67	91	74	100	80	108
5	125	97	132	114	155	128	174
6	150	131	178	152	206	170	230
8	200	218	296	256	347	288	391
10	250	333	452	406	550	468	635
12	300	508	686	636	862	745	1010
14	350	604	819	758	1028	889	1205
16	400	710	963	920	1247	1099	1489
18	450	970	1315	1370	1857	1710	2318
20	500	1390	1885	1980	2685	2482	3364
24	600	2050	2779	2700	3661	3200	2983
30	750	2920	3959	3940	5342	4807	6517
36	900	3530	4786	4960	6725	5990	8121
42	1050	5620	7620	7440	10087	10000	13558
48	1200	8800	11931	12100	16405	14905	20208

阀门尺寸 Valve size		300磅级扭矩, 轴处于下游, 标准阀座 关闭压差 Closing differential pressure											
英寸 Inch	DN	lb-ft@ 300psi	N.m@ 20.7bar	lb-ft@ 400psi	N.m@ 27.6bar	lb-ft@ 500psi	N.m@ 34.5bar	lb-ft@ 600psi	N.m@ 41.4bar	lb-ft@ 700psi	N.m@ 48.3bar	lb-ft@ 740psi	N.m@ 51bar
2 1/2	65	30	41	33	45	36	50	39	54	42	58	44	60
3	80	31	42	34	46	38	51	41	55	44	60	45	62
4	100	52	70	58	79	65	88	72	97	78	106	81	110
6	150	119	161	138	188	158	214	178	241	197	267	205	278
8	200	231	313	271	368	312	422	352	477	392	532	408	554
10	250	354	480	422	572	490	664	557	756	625	848	652	885
12	300	492	667	582	790	673	913	764	1035	854	1158	890	1207
14	350	824	1117	1012	1372	1200	1627	1388	1882	1576	2137	1651	2239
16	400	989	1340	1212	1643	1435	1946	1658	2248	1881	2550	1970	2671
18	450	1279	1734	1562	2118	1845	2520	2128	2885	2411	3269	2524	3422
20	500	1707	2314	2096	2842	2485	3369	2874	3897	3263	4424	3419	4635
24	600	2309	3131	2832	3840	3355	4549	3878	5258	4401	5967	4610	6251
30	750	4210	5708	5080	6888	5950	8067	6820	9247	7690	10426	8038	10898
36	900	7220	9789	8760	11877	10300	13965	11840	16053	13380	18141	13996	18976

阀门尺寸 Valve size		300磅级扭矩, 轴处于下游, 防火阀座 关闭压差 Closing differential pressure											
英寸 Inch	DN	lb-ft@ 300psi	N.m@ 20.7bar	lb-ft@ 400psi	N.m@ 27.6bar	lb-ft@ 500psi	N.m@ 34.5bar	lb-ft@ 600psi	N.m@ 41.4bar	lb-ft@ 700psi	N.m@ 48.3bar	lb-ft@ 740psi	N.m@ 51bar
2 1/2	65	45	62	50	68	54	75	59	81	63	87	66	90
3	80	57	77	58	79	60	81	63	83	63	85	63	86
4	100	86	117	94	127	102	138	110	149	118	160	121	164
6	150	189	256	212	287	235	319	258	350	281	381	290	394
8	200	313	424	354	480	395	536	436	591	477	647	493	669
10	250	464	629	522	708	580	786	638	865	696	944	719	975
12	300	825	1119	960	1302	1095	1485	1230	1668	1365	1851	1419	1924
14	350	922	1250	1076	1459	1230	1668	1384	1877	1538	2085	1600	2169
16	400	1170	1586	1396	1885	1610	2183	1830	2481	2050	2779	2138	2899
18	450	1980	2685	2440	3308	2900	3932	3360	4556	3820	5179	4004	5429
20	500	2800	3796	3460	4691	4120	5586	4780	6481	5400	7376	5704	7734
24	600	4400	5966	5400	7321	6400	8677	7400	10033	8400	11389	8800	11931

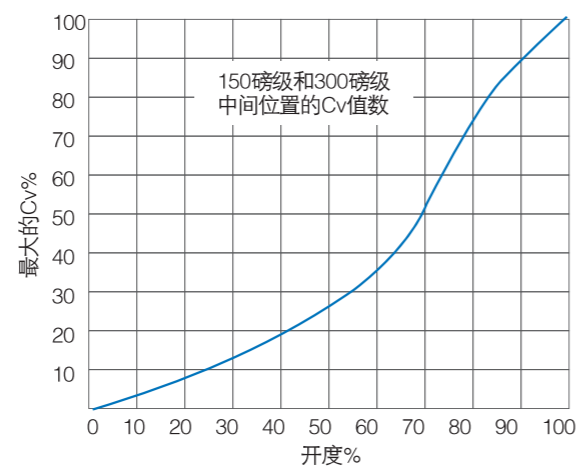
**流量参数**  
Flow parameters

下表提供了150磅级和300磅级蝶阀的流量系数。Cv值表示压差为1磅/英寸<sup>2</sup> (0.07巴)，温度为60° F (15.6°C) 时每分钟流过全开启阀门的水流量，单位为美国加仑数/分钟。

150磅级 Class		
阀门尺寸 Valve size		Cv
英寸 Inch	DN	
2	50	57
2-1/2	65	78
3	80	165
4	100	400
5	125	650
6	150	1,050
8	200	2,200
10	250	3,300
12	300	5,100
14	350	5,800
16	400	8,000
18	450	10,500
20	500	14,000
24	600	21,600
30	750	34,000
36	900	55,500
42	1050	82,650
48	1200	108,300
54	1350	133,500
60	1500	159,000

300磅级 Class		
阀门尺寸 Valve size		Cv
英寸 Inch	DN	
2 1/2	65	78
3	80	165
4	100	400
6	150	1,050
8	200	1,800
10	250	3,150
12	300	4,750
14	350	5,200
16	400	6,900
18	450	9,300
20	500	11,300
24	600	18,500
30	750	29,100
36	900	47,500

The flow coefficient of 150lb and 300lb butterfly valves is listed in the following table. Cv value indicates water flow per minute that passes through the fully opened valve when the differential pressure is 1psi (0.07bar) and the temperature is 60° F (15.6°C), and its unit is USgal/min.



为确定中间位置阀门的Cv值：  
To confirm Cv value of the valve at the middle position:

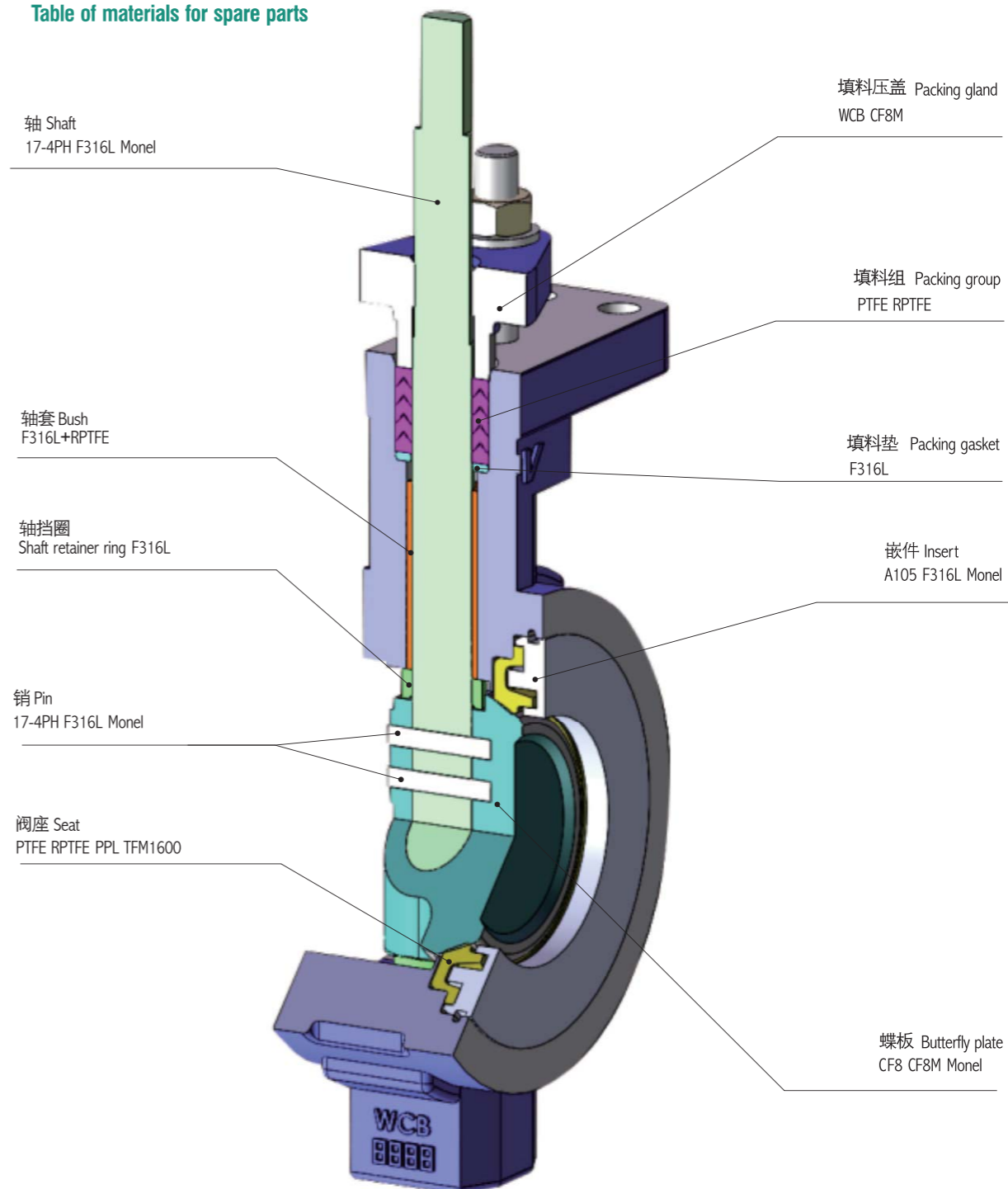
1. 从曲线表中确定最大Cv值的百分率
2. 将曲线表中的最大Cv值的百分率乘以流量数据表中的Cv值

1. Confirm the percentage of the maximum Cv value from the curve
2. Multiply the percentage of the maximum Cv value from the curve by the Cv value from the flow datasheet

例如：6"(DN150)150级蝶阀70%开度时的Cv值为：  
(1) 从曲线表中确定6"(DN150)150级蝶阀70%开度时的最大Cv值的百分率为53%  
(2) 53%的最大Cv值为，Cv值=0.53 × 1050=560

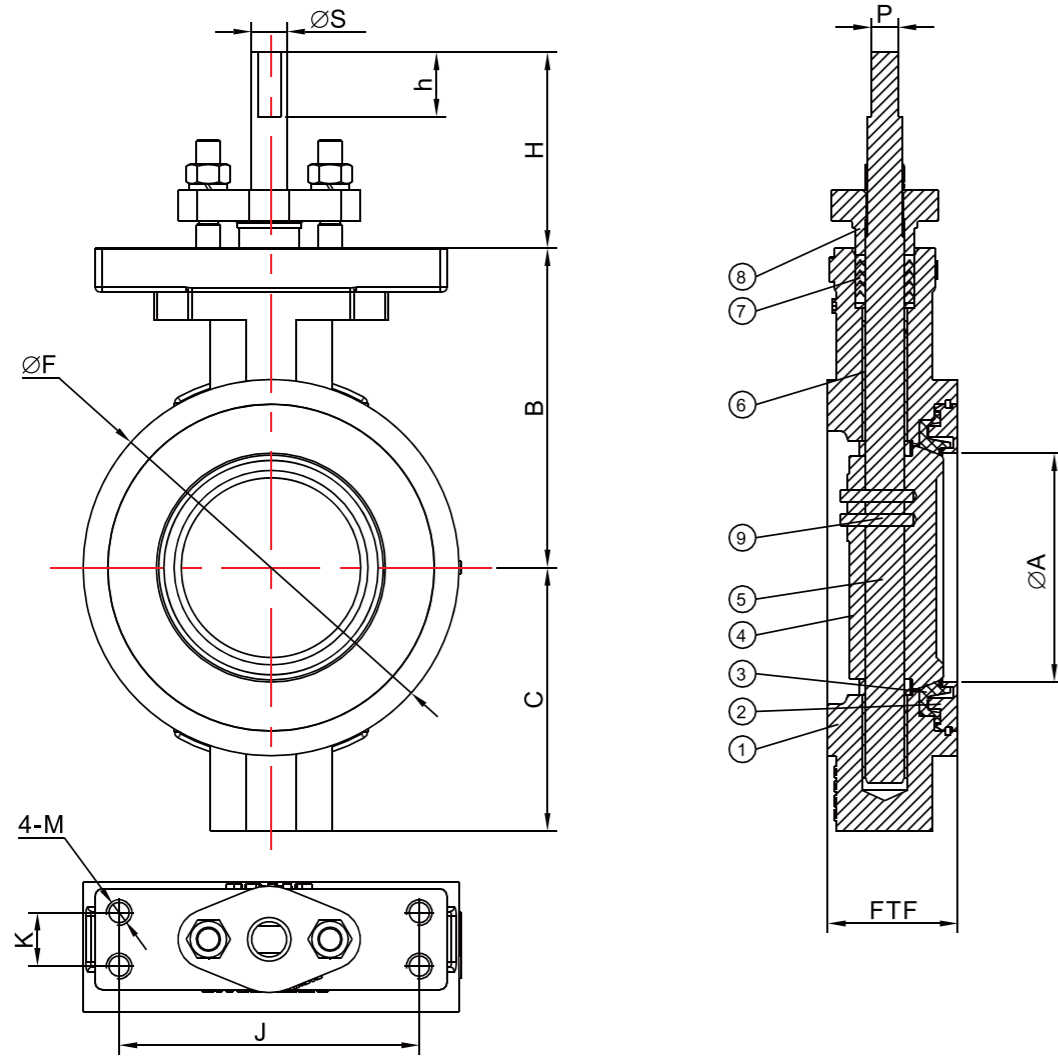
For example: The Cv value of the butterfly valve of 6"(DN150), 150lb under opening of 70% is:  
(1) Confirm the percentage of the maximum Cv value of the butterfly valve of 6"(DN150), 150lb under opening of 70% is 53%.  
(2) The maximum Cv value is: Cv value=0.53 × 1050=560

**零件材料明细表**  
Table of materials for spare parts





150磅级对夹式蝶阀尺寸  
Class 150 Wafer Type Butterfly valve Dimension



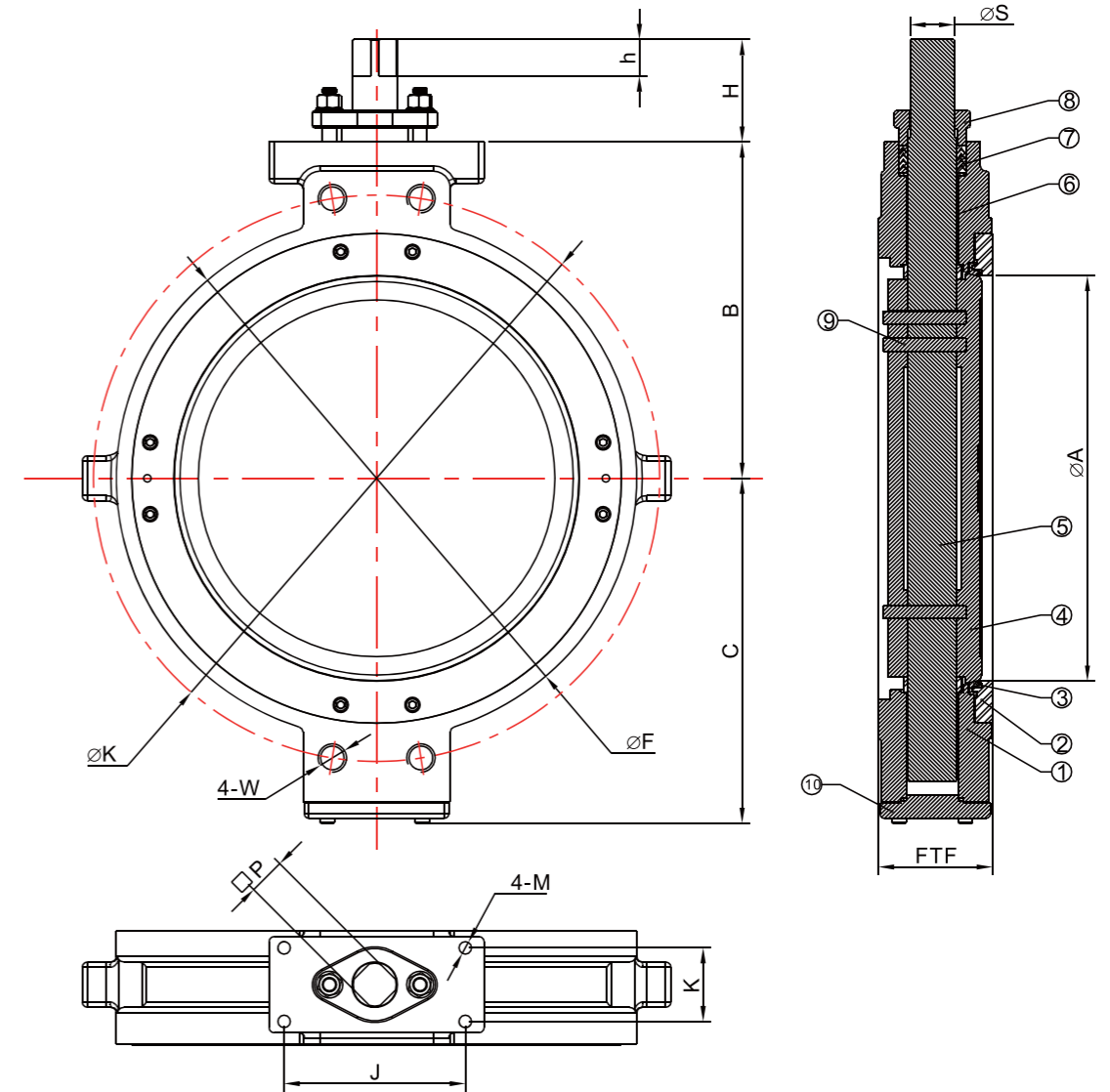
NPS	ØA	B	C	ØF	FTF±3.3	H	h	P	ØS	J	K	M
1 1/2"	38	82	70	102	44	42.5	14	7	10	125.4	22.4	M10
2"	50	82	70	102	44	42.5	14	7	10	125.4	22.4	M10
2.5"	59	111	82	118	48	82	27	11.2	14.8	125.4	22.4	M10
3"	73	120	93	132	48	82	27	11.2	14.8	125.4	22.4	M10
4"	96	133	110	157	54	82	27	11.2	14.8	125.4	22.4	M10
5"	111	135	120	186	57	82	27	11.2	14.8	125.4	22.4	M10
6"	142	152	135	217	57	82	27	14	18	125.4	22.4	M10
8"	188	187	172	273	64	82	27	15.9	21.9	125.4	22.4	M10
10"	236	231	202	330	71	97	28	20.6	28	142.7	37.3	M12
12"	282	260	241	376	81	97	33	23.8	33.3	142.7	37.3	M12
14"	314	315	295	413	92	105	41	28.7	37	142.7	37.3	M16

请在需要的材料配置方格里打勾，需要其它材料的请在空白列  
Place a tick in the appropriate box which material you required.  
Other materials tick the "other" column and remark.

No	Partname	<input type="checkbox"/> A	<input type="checkbox"/> B	<input type="checkbox"/> C	<input type="checkbox"/> D	<input type="checkbox"/> E	<input type="checkbox"/> Other
9	Pin	17-4PH	17-4PH	17-4PH	17-4PH	17-4PH	
8	Cover	WCB	WCB	CF8	CF8M	CF3M	
7	Packing	RPTFE	RPTFE	RPTFE	RPTFE	RPTFE	
6	Sleeve	316L+RPTFE					
5	Stem	17-4PH	17-4PH	17-4PH	17-4PH	17-4PH	
4	Disc	CF8	CF8M	CF8	CF8M	CF3M	
3	Seat	RPTFE	RPTFE	RPTFE	RPTFE	RPTFE	
2	Insert	A105	A105	F304	F316	F316L	
1	Body	WCB	WCB	CF8	CF8M	CF3M	

Data	Technology standard
Pressure	Class 150
Design & manufacturing standards	API609
Type	Wafer
Temperature & pressure standards	ASME B16.34
Temperature	-30°C~180°C
Inspection & test	API598
Leakage	VI FC170-2
Flange size	ASME B16.5

150磅级对夹式蝶阀尺寸  
Class 150 Wafer Type Butterfly valve Dimension



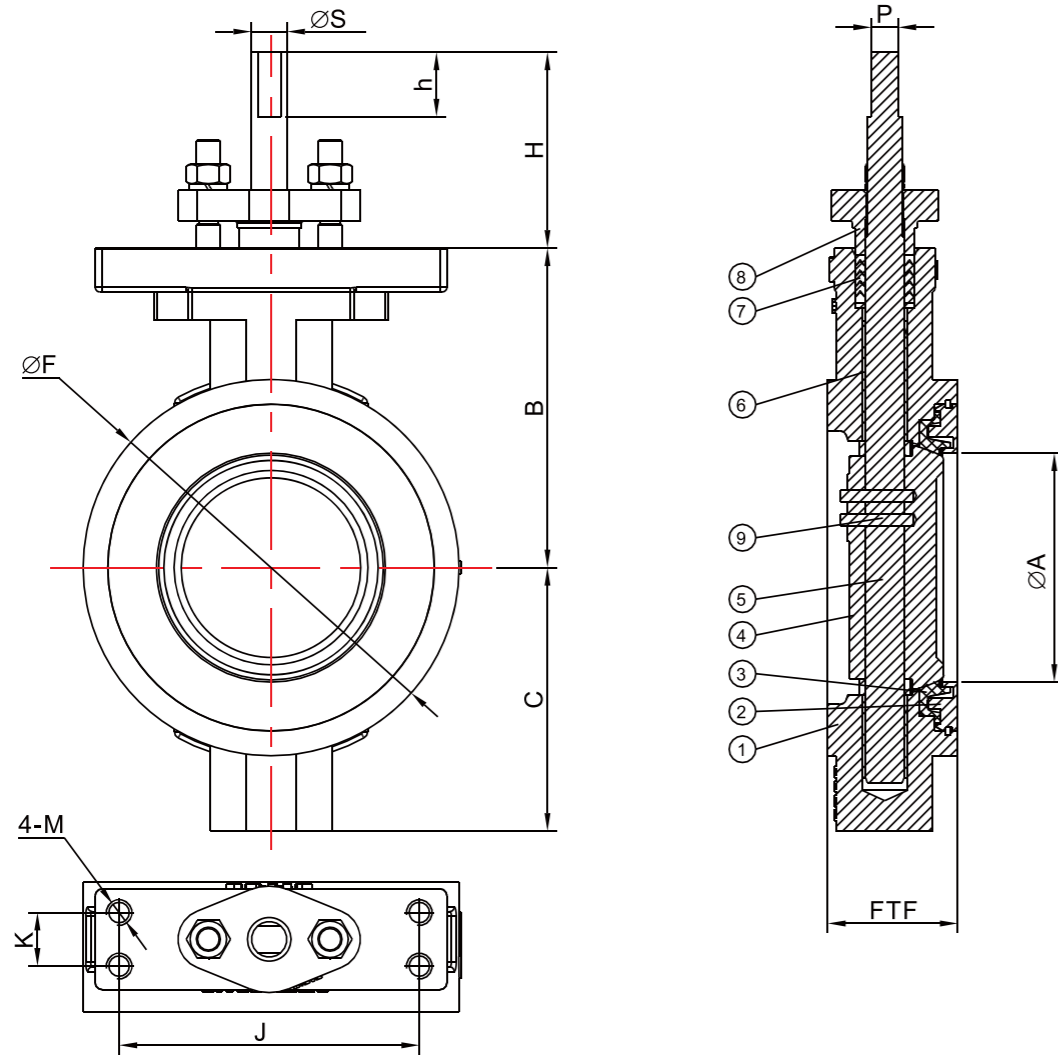
请在需要的材料配置方格里打勾，需要其它材料的请在空白列  
Place a tick in the appropriate box which material you required.  
Other materials tick the "other" column and remark.

No	Partname	<input type="checkbox"/> A	<input type="checkbox"/> B	<input type="checkbox"/> C	<input type="checkbox"/> D	<input type="checkbox"/> E	<input type="checkbox"/> Other
9	Pin	17-4PH	17-4PH	17-4PH	17-4PH	17-4PH	
8	Cover	WCB	WCB	CF8	CF8M	CF3M	
7	Packing	RPTFE	RPTFE	RPTFE	RPTFE	RPTFE	
6	Sleeve	316L+RPTFE					
5	Stem	17-4PH	17-4PH	17-4PH	17-4PH	17-4PH	
4	Disc	CF8	CF8M	CF8	CF8M	CF3M	
3	Seat	RPTFE	RPTFE	RPTFE	RPTFE	RPTFE	
2	Insert	A105	A105	F304	F316	F316L	
1	Body	WCB	WCB	CF8	CF8M	CF3M	

NPS	ØA	B	C	ØF	FTF±3.3	H	h	P	ØS	J	K	M	ØK	W
16"	362	355	329	470	102	111	41	33.5	42	203.2	82.6	M16	539.8	Ø30
18"	413	356	340	533	114	111	41	35	47	203.2	82.6	M16	577.9	1 1/8"-BUN
20"	455	377	387	584	127	115	41	41.4	50	203.2	82.6	M16	635	1 1/8"-BUN
24"	548	490	467	692	154	130	51	64	254	107.7	M20	749.3	1 1/4"-BUN	
28"	682	570	552	799	165	157	50.8	50.8	66	254	107.7	M20	863.6	1 1/4"-BUN
30"	702	570	557	863	167	157	50.8	50.8	66	254	107.7	M20	914.4	1 1/4"-BUN
32"	702	570	557	905	191	157	50.8	50.8	66	254	107.7	M20	977.9	1 1/2"-BUN
48"	1168	841	805	1385	254	293	90	90	125	381	178	M20	1422.4	1 1/2"-BUN

Data	Technology standard
Pressure	Class 150
Design & manufacturing standards	API609
Type	Wafer
Temperature & pressure standards	ASME B16.34
Temperature	-30°C~180°C
Inspection & test	API598
Leakage	VI FC170-2
Flange size	ASME B16.5

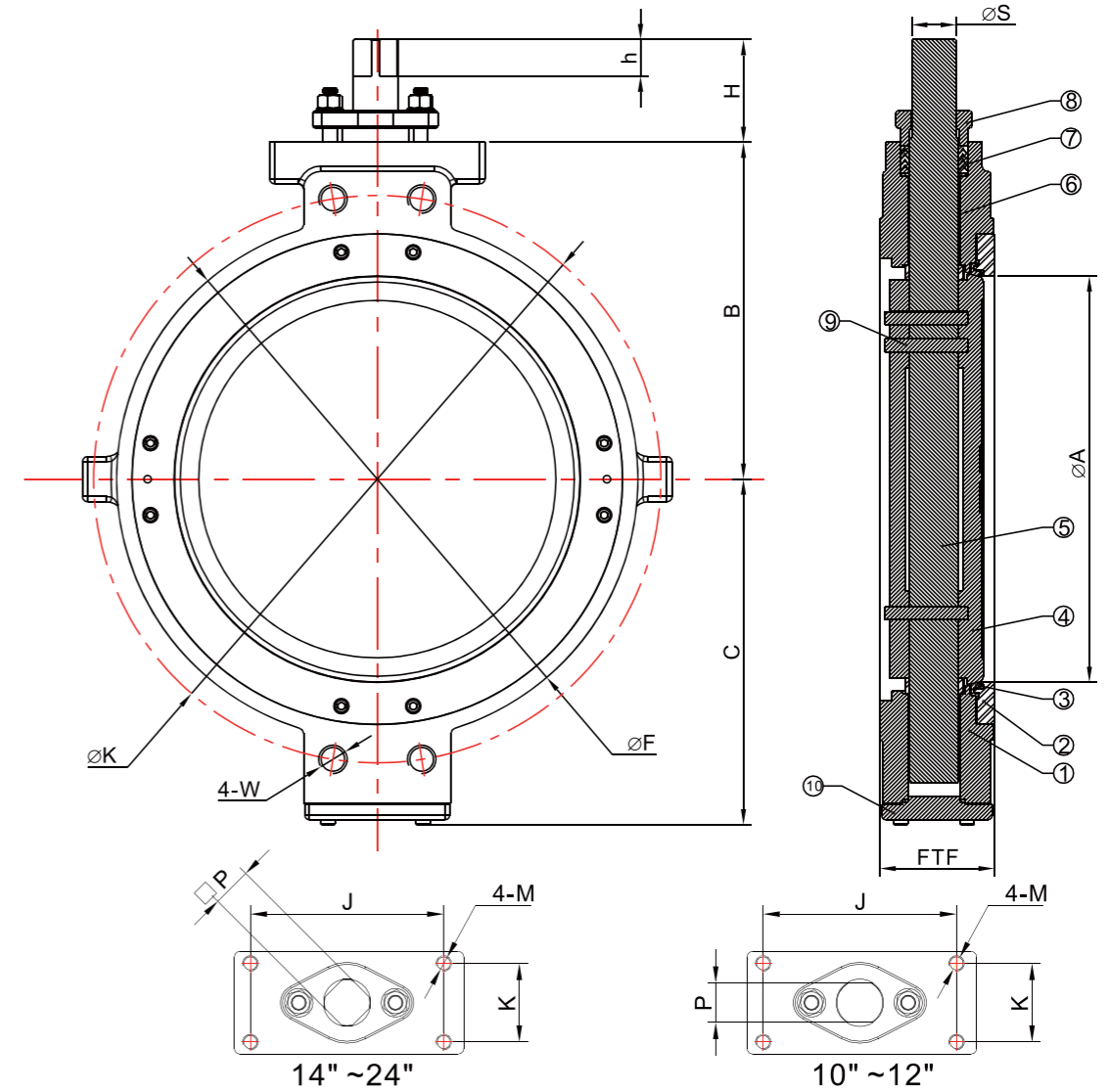
300磅级对夹式蝶阀尺寸  
Class 300 Wafer Type Butterfly valve Dimension



请在需要的材料配置方框里打勾，需要其它材料的请在空白列  
Place a tick in the appropriate box which material you required.  
Other materials tick the "other" column and remark.

No	Partname	<input type="checkbox"/> A	<input type="checkbox"/> B	<input type="checkbox"/> C	<input type="checkbox"/> D	<input type="checkbox"/> E	<input type="checkbox"/> Other	NPS	ØA	B	C	ØF	FTF±3.3	H	h	P	ØS	J	K	M	
								2"	38	81.8	70	102	44	42.5	14	7	10	125.4	22.4	M10	
								2.5"	59	111.1	82.5	118	48	82	27	11.2	14.8	125.4	22.4	M10	
9	Pin	<input type="checkbox"/> 17-4PH	<input type="checkbox"/> 17-4PH	<input type="checkbox"/> 17-4PH	<input type="checkbox"/> 17-4PH	<input type="checkbox"/> 17-4PH		3"	73	120.5	93	132	48	82	27	11.2	14.8	125.4	22.4	M10	
8	Cover	<input type="checkbox"/> WCB	<input type="checkbox"/> WCB	<input type="checkbox"/> CF8	<input type="checkbox"/> CF8M	<input type="checkbox"/> CF3M		4"	96	133.3	110	157	54	82	27	11.2	14.8	125.4	22.4	M10	
7	Packing	<input type="checkbox"/> RPTFE	<input type="checkbox"/> RPTFE	<input type="checkbox"/> RPTFE	<input type="checkbox"/> RPTFE	<input type="checkbox"/> RPTFE		5"	111	135	120	186	57	82	27	11.2	14.8	125.4	22.4	M10	
6	Sleeve	<input type="checkbox"/> 316L+RPTFE							6"	142	174	153	217	59	82	27	15.9	21.9	125.4	22.4	M10
								8"	188	212	180	273	73	95	28	20.6	28	142.7	37.3	M12	
5	Stem	<input type="checkbox"/> 17-4PH	<input type="checkbox"/> 17-4PH	<input type="checkbox"/> 17-4PH	<input type="checkbox"/> 17-4PH	<input type="checkbox"/> 17-4PH		Data		Technology standard											
4	Disc	<input type="checkbox"/> CF8	<input type="checkbox"/> CF8M	<input type="checkbox"/> CF8	<input type="checkbox"/> CF8M	<input type="checkbox"/> CF3M		Pressure	Class 300	Design & manufacturing standards		API609									
3	Seat	<input type="checkbox"/> RPTFE	<input type="checkbox"/> RPTFE	<input type="checkbox"/> RPTFE	<input type="checkbox"/> RPTFE	<input type="checkbox"/> RPTFE		Type	Wafer	Temperature & pressure standards		ASME B16.34									
2	Insert	<input type="checkbox"/> A105	<input type="checkbox"/> A105	<input type="checkbox"/> F304	<input type="checkbox"/> F316	<input type="checkbox"/> F316L		Temperature	-30°C~180°C	Inspection & test		API598									
1	Body	<input type="checkbox"/> WCB	<input type="checkbox"/> WCB	<input type="checkbox"/> CF8	<input type="checkbox"/> CF8M	<input type="checkbox"/> CF3M		Leakage	VI FC170-2	Flange size		ASME B16.5									

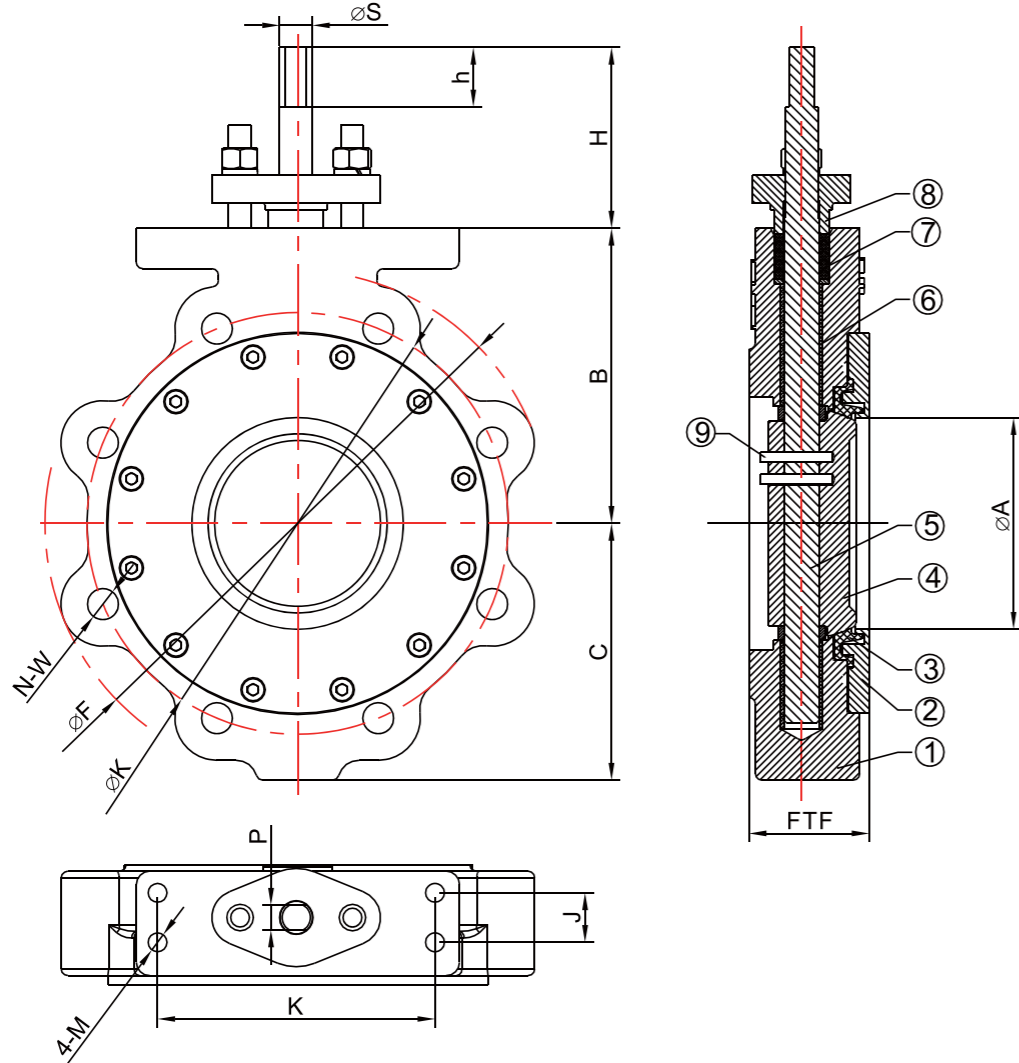
300磅级对夹式蝶阀尺寸  
Class 300 Wafer Type Butterfly valve Dimension



请在需要的材料配置方框里打勾，需要其它材料的请在空白列  
Place a tick in the appropriate box which material you required.  
Other materials tick the "other" column and remark.

No	Partname	<input type="checkbox"/> A	<input type="checkbox"/> B	<input type="checkbox"/> C	<input type="checkbox"/> D	<input type="checkbox"/> E	<input type="checkbox"/> Other	NPS	ØA	B	C	ØF	FTF±3.3	H	h	ØP	ØS	J	PK	M	ØK	4-W	
								10"	236	254	222	327	83	100	33	23.8	33.3	142.7	37.3	M12	387.4	1"-8UN	
								12"	282	282	284	385	92	105	41	28.7	37	142.7	37.3	M12	450.8	1 1/8"-8UN	
9	Pin	<input type="checkbox"/> 17-4PH	<input type="checkbox"/> 17-4PH	<input type="checkbox"/> 17-4PH	<input type="checkbox"/> 17-4PH	<input type="checkbox"/> 17-4PH		14"	314	325	310	416	117	102	34.5	41.4	50	203.2	82.6	M16	514.4	1 1/8"-8UN	
8	Cover	<input type="checkbox"/> WCB	<input type="checkbox"/> WCB	<input type="checkbox"/> CF8	<input type="checkbox"/> CF8M	<input type="checkbox"/> CF3M		16"	362	350	338	472	133	102	34.5	41.4	50	203.2	82.6	M16	571.5	1 1/4"-8UN	
7	Packing	<input type="checkbox"/> RPTFE	<input type="checkbox"/> RPTFE	<input type="checkbox"/> RPTFE	<input type="checkbox"/> RPTFE	<input type="checkbox"/> RPTFE		18"	413	424	412	537	149	118	40	51	64	254	107.7	M20	628.6	1 1/4"-8UN	
								20"	454	446	440	588	159	130	43	51	64	254	107.7	M20	658.8	1 1/4"-8UN	
6	Sleeve	<input type="checkbox"/> 316L+RPTFE							24"	548	500	505	692	181	145	60	51	64	254	107.7	M20	812.8	1 1/2"-8UN
5	Stem	<input type="checkbox"/> 17-4PH	<input type="checkbox"/> 17-4PH	<input type="checkbox"/> 17-4PH	<input type="checkbox"/> 17-4PH	<input type="checkbox"/> 17-4PH		Data		Technology standard													
4	Disc	<input type="checkbox"/> CF8	<input type="checkbox"/> CF8M	<input type="checkbox"/> CF8	<input type="checkbox"/> CF8M	<input type="checkbox"/> CF3M		Pressure	Class 300	Design & manufacturing standards		API609											
3	Seat	<input type="checkbox"/> RPTFE	<input type="checkbox"/> RPTFE	<input type="checkbox"/> RPTFE	<input type="checkbox"/> RPTFE	<input type="checkbox"/> RPTFE		Type	Wafer	Temperature & pressure standards		ASME B16.34											
2	Insert	<input type="checkbox"/> A105	<input type="checkbox"/> A105	<input type="checkbox"/> F304	<input type="checkbox"/> F316	<input type="checkbox"/> F316L		Temperature	-30°C~180°C	Inspection & test		API598											
1	Body	<input type="checkbox"/> WCB	<input type="checkbox"/> WCB	<input type="checkbox"/> CF8	<input type="checkbox"/> CF8M	<input type="checkbox"/> CF3M		Leakage	VI FC170-2	Flange size		ASME B16.5											

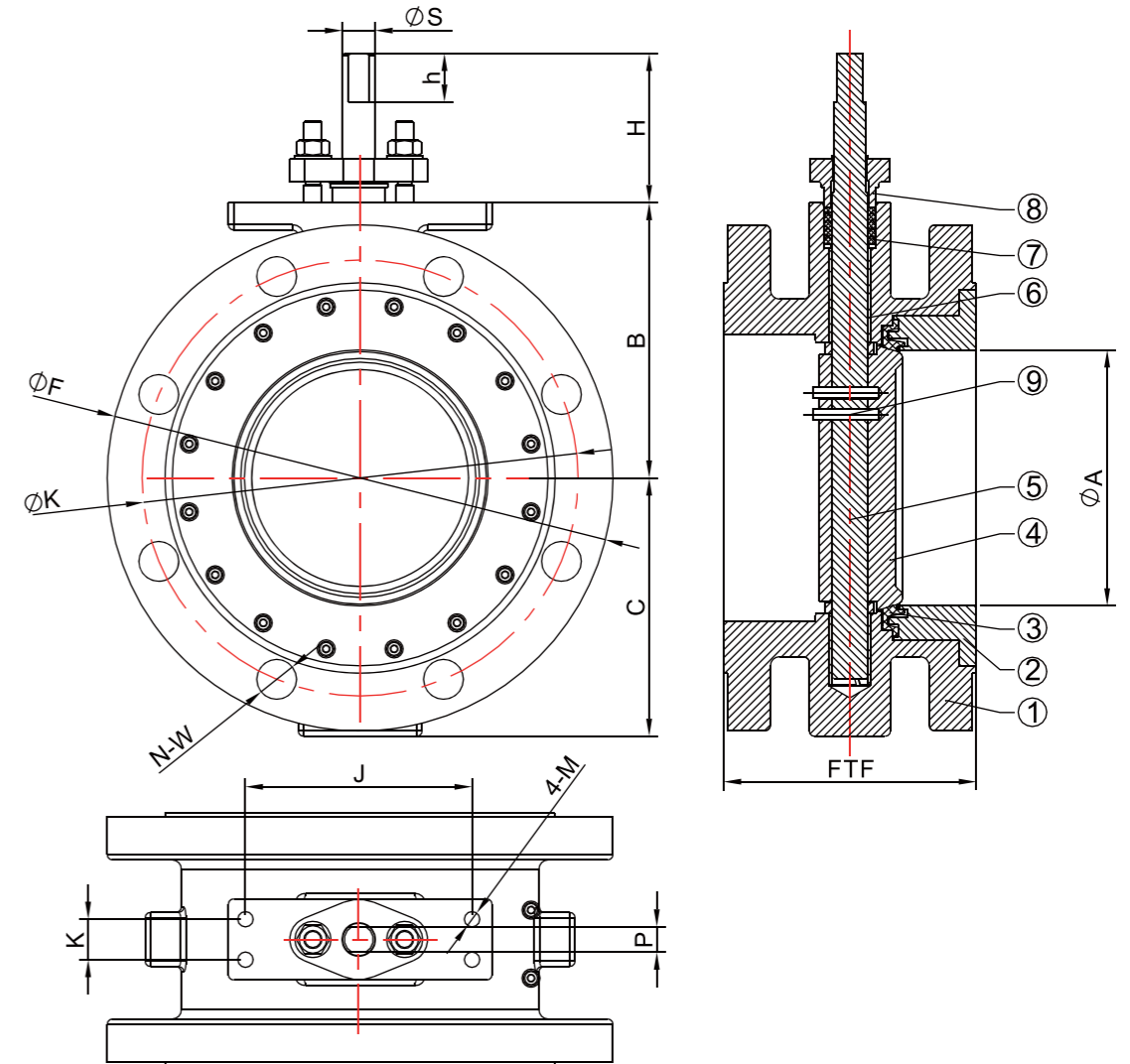
150磅级凸耳式蝶阀尺寸  
Class 150 LUG Type Butterfly valve Dimension



Place a tick in the appropriate box which material you required.  
Other materials tick the "other" column and remark.

No	Partname	A	B	C	D	E	Other	NPS	ØA	C	FTFB <sub>3.3</sub>	H	h	P	ØS	J	K	M	ØF	ØK	N-W	
								2.5"	59	111.1	82.5	48	82	27	11.2	14.8	125.4	22.4	M10	180	139.7	4-5/8"-11UNC
								3"	73	120.5	93	48	82	27	11.2	14.8	125.4	22.4	M10	190	152.4	4-5/8"-11UNC
								4"	96	133.3	110	54	82	27	11.2	14.8	125.4	22.4	M10	230	190.5	8-5/8"-11UNC
								5"	111	135	120	57	82	27	11.2	14.8	125.4	22.4	M10	255	215.9	8-3/4"-10UNC
								6"	142	152.4	135	57	82	27	14	18	125.4	22.4	M10	280	241.3	8-3/4"-10UNC
								8"	188	187.3	172	64	82	27	15.9	21.9	125.4	22.4	M10	345	298.5	8-3/4"-10UNC
								10"	236	231.8	202	71	97	28	20.6	28	142.7	37.3	M12	405	362	12-7/8"-9UNC
								12"	282	260.3	241.3	81	97	33	23.8	33.3	142.7	37.3	M12	485	431.8	12-7/8"-9UNC
								14"	314	315	295	92	105	41	28.7	37	142.7	37.3	M16	535	476.3	12-1"-8UN
9	Pin	17-4PH	17-4PH	17-4PH	17-4PH	17-4PH		Data		Technology standard												
8	Cover	WCB	WCB	CF8	CF8M	CF3M		Pressure	Class 150	Design & manufacturing standards		API609										
7	Packing	RPTFE	RPTFE	RPTFE	RPTFE	RPTFE		Type	LUG	Temperature & pressure standards		ASME B16.34										
6	Sleeve	316L+RPTFE						Temperature	-30°C~180°C	Inspection & test		API598										
5	Stem	17-4PH	17-4PH	17-4PH	17-4PH	17-4PH		Leakage	VI FC170-2	Flange size		ASME B16.5										

150磅级双法兰式蝶阀尺寸  
Class 150 Double Flange Type Butterfly valve Dimension



Place a tick in the appropriate box which material you required.  
Other materials tick the "other" column and remark.

No	Partname	A	B	C	D	E	Other	NPS	Ø	C	FTFB <sub>3.3</sub>	HA	h	P	ØS	J	M	ØF	ØK	N-W		
								3"	73	121	93	114	82	27	11.2	14.8	125.4	22.4	M10	190	152.4	4-Ø19
								4"	96	133.3	110	127	82	27	11.2	14.8	125.4	22.4	M10	230	190.5	8-Ø19
								5"	111	135	120	140	82	27	11.2	14.8	125.4	22.4	M10	255	215.9	8-Ø22
								6"	142	152.4	143	140	82	27	14	18	125.4	22.4	M10	280	241.3	8-Ø22
								8"	188	187.3	172	152	82	27	15.9	21.9	125.4	22.4	M10	345	298.5	8-Ø22
								10"	236	231.8	202	168	97	28	20.6	28	142.7	37.3	M12	405	362	12-Ø26
								12"	282	260.3	241.3	178	97	33	23.8	33.3	142.7	37.3	M12	485	431.8	12-Ø26
								14"	314	315	295	190	105	41	28.7	37	142.7	37.3	M16	535	476.3	12-Ø29
9	Pin	17-4PH	17-4PH	17-4PH	17-4PH	17-4PH		Data		Technology standard												
8	Cover	WCB	WCB	CF8	CF8M	CF3M		Pressure	Class 150	Design & manufacturing standards		API609										
7	Packing	RPTFE	RPTFE	RPTFE	RPTFE	RPTFE		Type	Double Flange	Temperature & pressure standards		ASME B16.34										
6	Sleeve	316L+RPTFE						Temperature	-30°C~180°C	Inspection & test		API598										
5	Stem	17-4PH	17-4PH	17-4PH	17-4PH	17-4PH		Leakage	VI FC170-2	Flange size		ASME B16.5										